

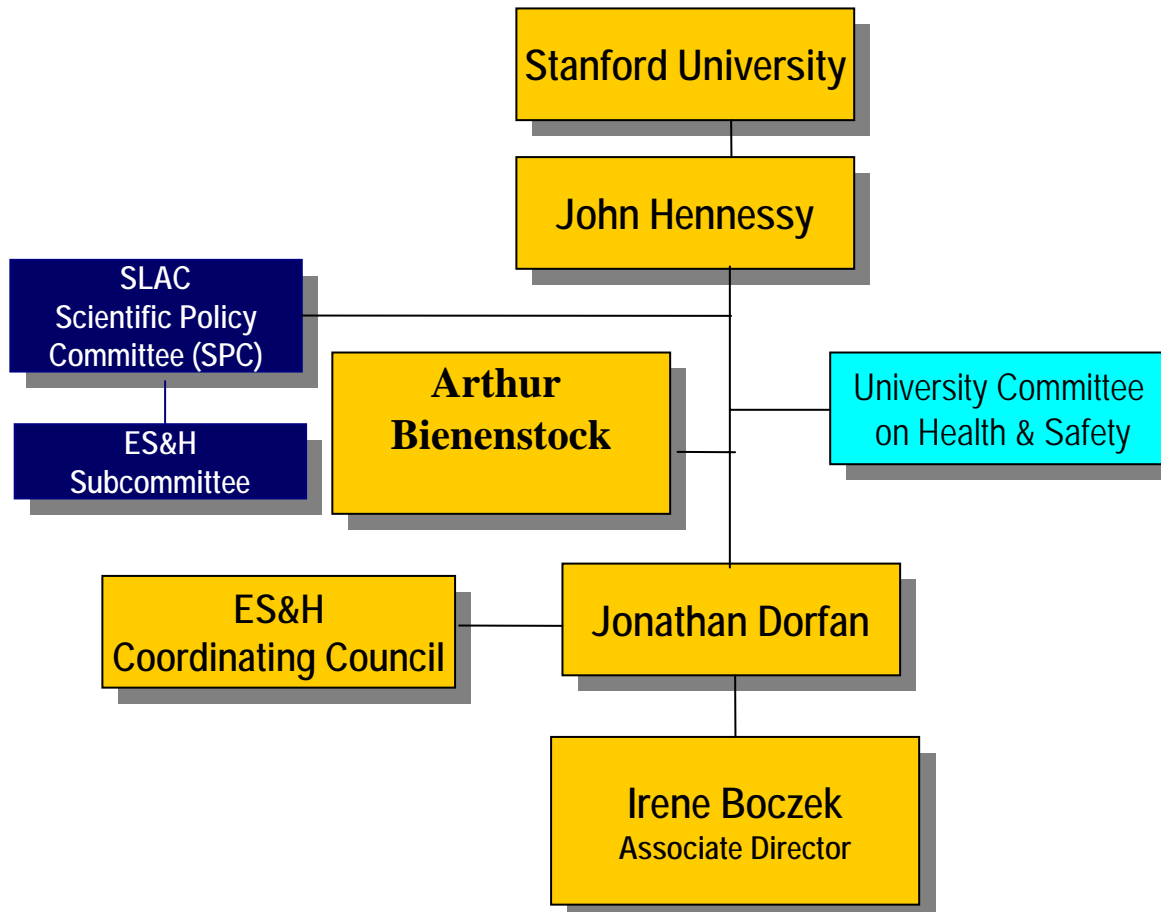
Program Review

June 2004



6/3/2004

ES&H Organization



ES&H Budget

-\$12.8M

-\$2.3M
(remediation)

Employees

-72 total

-6 (remediation)

ES&H Performance Goals

- Protect employees
- Protect the public and the environment
- Be good stewards of our environment
- Systematically integrate ES&H into management and work practices at all levels throughout SLAC using the DOE's ISMS

ES&H Performance for 2003

- As measured by the DOE
- As measured against ourselves
- As measured against the other science laboratories

Historical ES&H Performance

1998	Outstanding
1999	Outstanding
2000	Outstanding
2001	Excellent
2002	Outstanding
2003	Excellent

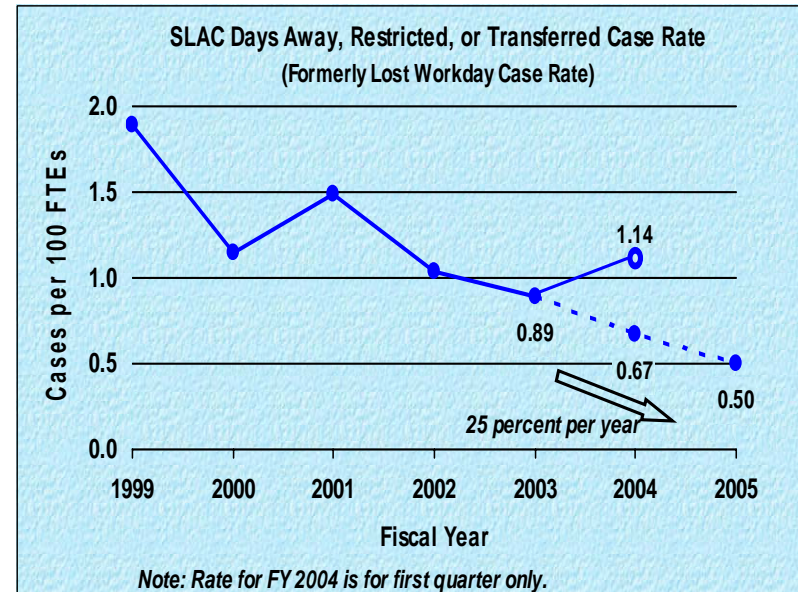
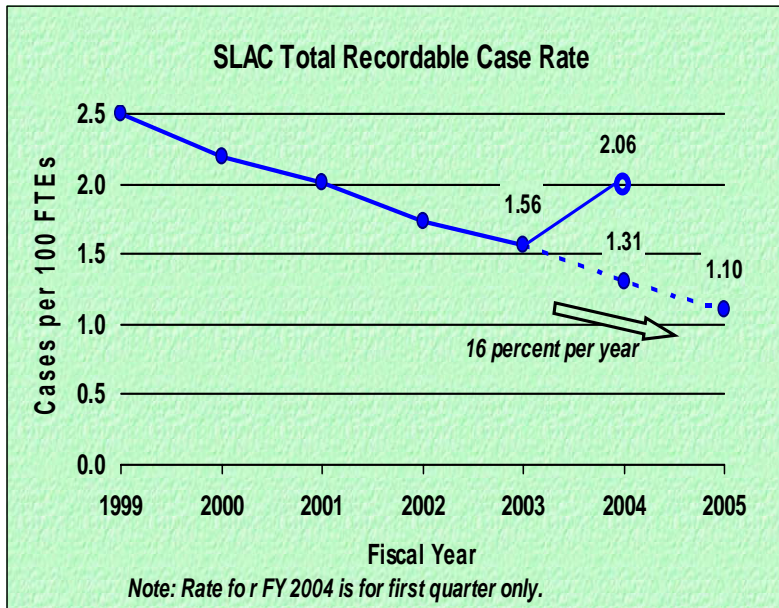
SLAC 2003 Performance Compared to Ourselves and other SC Labs

	SLAC Lower than SC Average (last available data)	SLAC Change in Performance Over time	Comments
Total Recordable Case Rate			SLAC above SC average
DART Rate			SLAC above SC average
Worker Radiation Dose	X	4 fold reduction since 1995	
Environmental Occurrences	X		None since 2002, have secured SLI funding to upgrade underground utilities
Hazardous Waste Generation (2001 data)		8 fold reduction since 1992	SLAC contributed 16% to the total amount generated by SC labs
Low Level Radioactive Waste Generation (2001 Data)	X		SLAC contributed less than 4% of the total amount
Estimated Hypothetical MEI	X		Less than 1/100 th of EPA limit for air, and 5% of limit for prompt radiation; one of lowest SC labs
Occurrences (2002 Data)	X	2 fold reduction since 1999	

Summary of ES&H Performance

- As measured by the DOE
 - SLAC performance was rated “excellent” by DOE last year; and was rated outstanding 4 of the last 6 years
- As measured against ourselves
 - SLAC performance is acceptable or has improved in 6 of the 8 categories
 - SLAC Accident Rate have increased
- As measured against the other science laboratories
 - SLAC ES&H performance was better than the average of other SC laboratories in 5 out of 8 cases
 - SLAC Accident Rates are above the SC average

Accident History at SLAC





Accident Reduction Action Plan

- Programs To Prevent Accidents in the Future
- Improve the Responsibility and Accountability Systems for Accident Reduction throughout SLAC
- Focus on Accident Prevention
- Focus on Back to Health Programs
- Convene a Director-led Accident Reduction Task Force

ES&H Performance Goals for 2004

- Reduce accidents: Prepare and implement an accident reduction plan
- Prepare a plan to correct and fund OSHA findings and implement plan
- Implement new work planning process (job/area hazard analysis process) and improved management accountability system
- Design and implement a new corrective action tracking system
- Implement a chemical management system
- Implement agreed upon remediation strategy and plan
- Complete Type B Corrective Actions
- Maintain DOE rating of "outstanding"

ES&H Performance Goals for 2004

- Reduce accidents: Prepare and implement an accident reduction plan – *plan being implemented*
- Prepare a plan to correct and fund OSHA findings and implement plan – *plan being prepared*
- Implement new work planning process (job/area hazard analysis process) and improved management accountability system – *on target*
- Design and implement a new corrective action tracking system – *on target*
- Implement a chemical management system – *on target*
- Implement agreed upon remediation strategy and plan – *progress made*
- Complete Type B Corrective Actions – *on target*
- Maintain DOE rating of “outstanding” – *unlikely given accident rates*